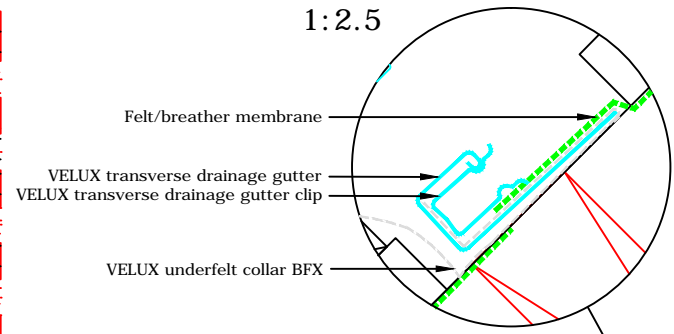
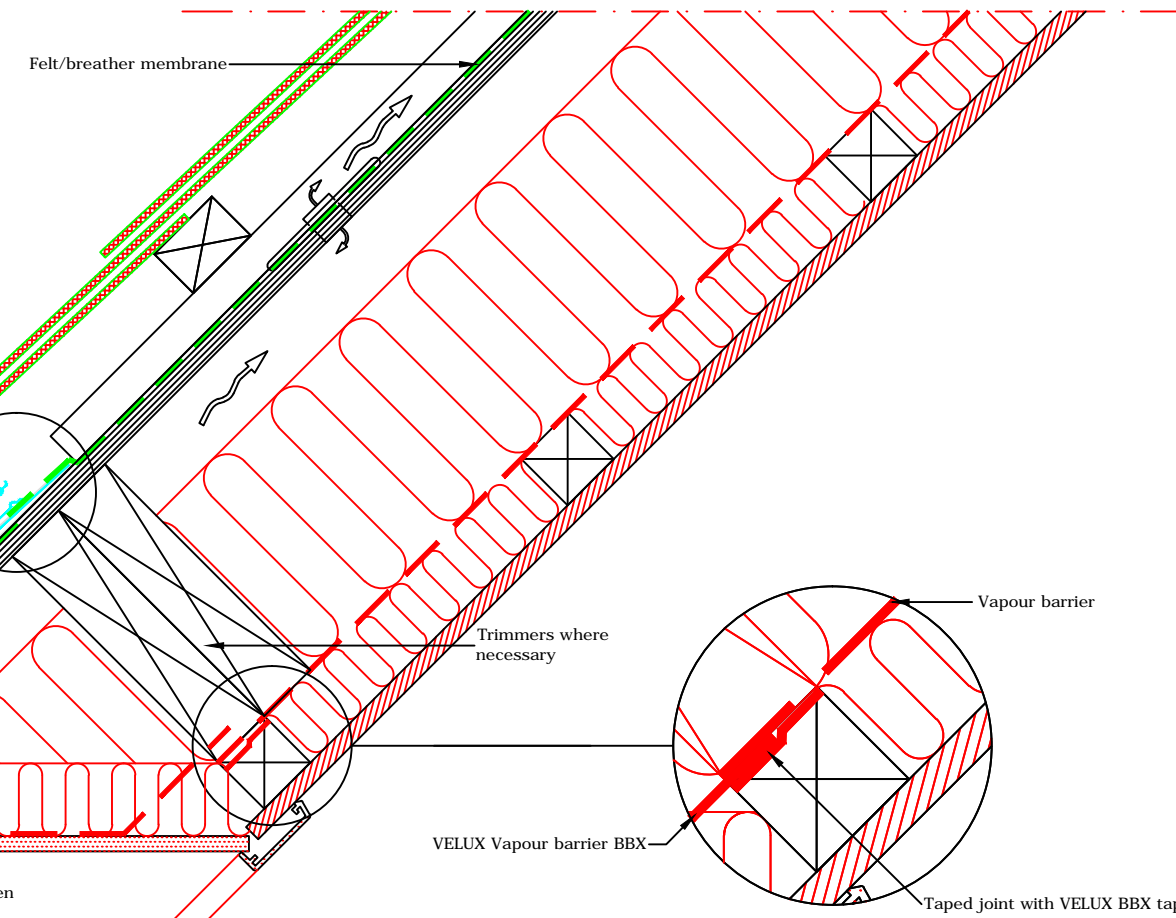


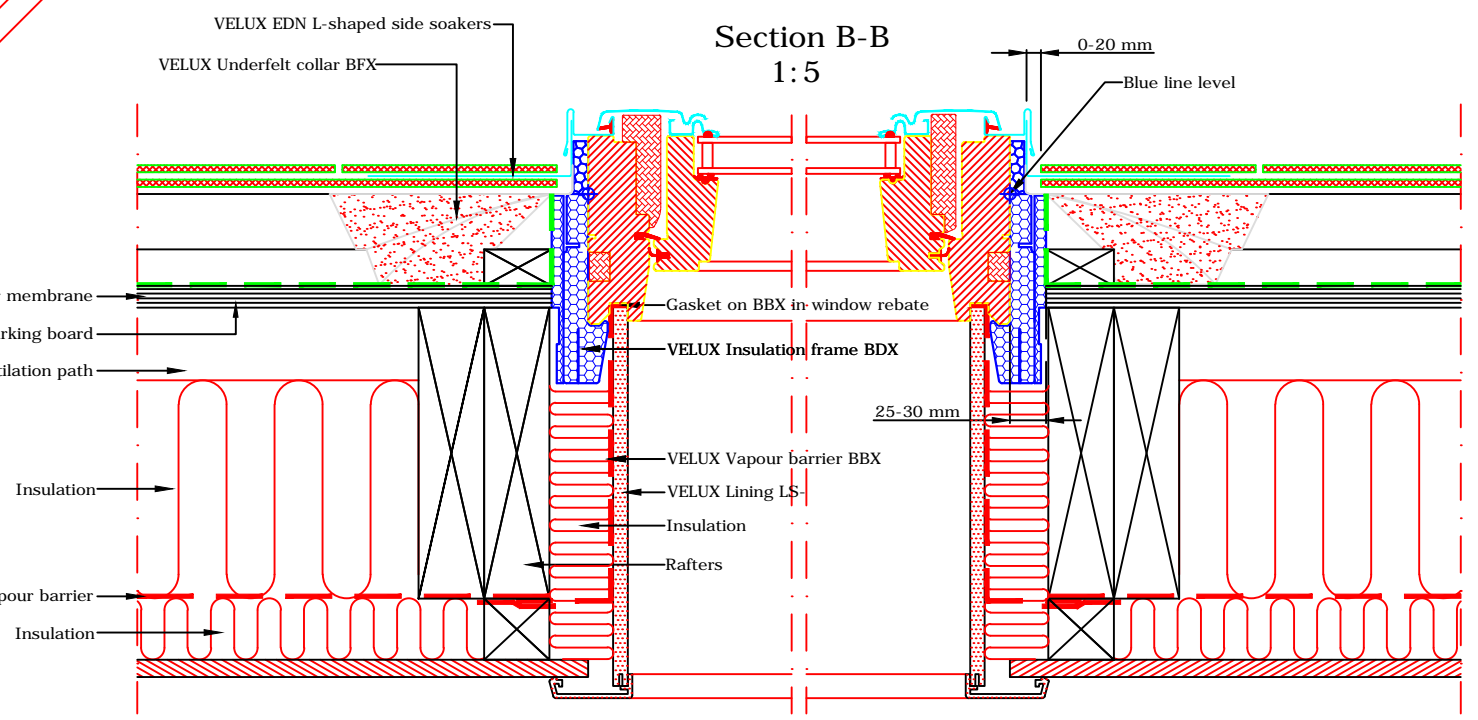
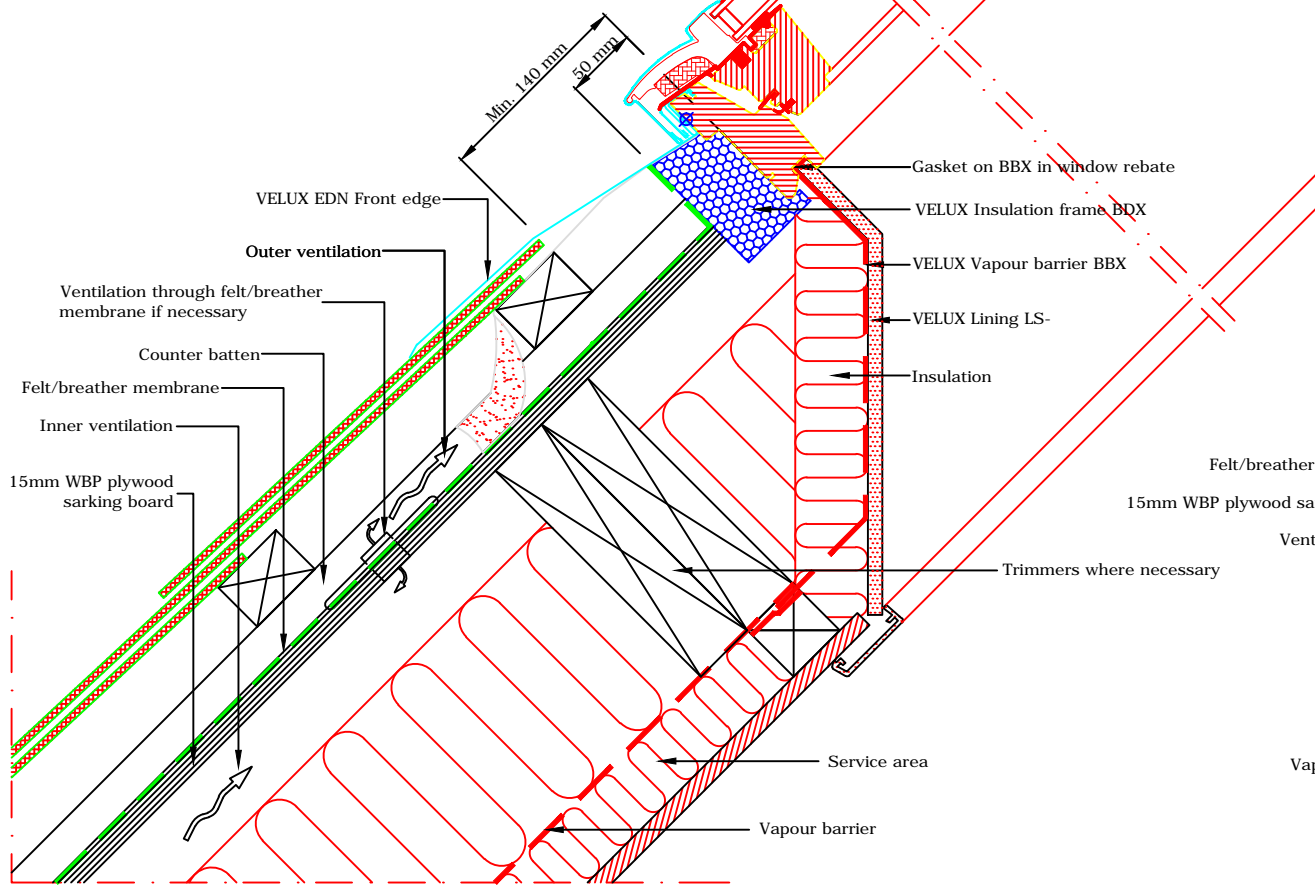
TYPICAL ELEVATION



Section A-A  
1:5



- VELUX Products:
- GGL 15°-90°
  - EDN 20°-90°
  - BFX
  - BDX
  - BBX
  - LS-
- Roof covering:
- SLATES < 8 mm
  - SARKING BOARD



Section B-B  
1:5

**VELUX**  
 VELUX Company Ltd  
 Woodside Way  
 Glenrothes, Fife KY7 4ND  
 tel: +44 (0) 1592 778 225

**VELUX centre-pivot roof window**  
**GGL single installation into natural slate on sarking board**  
 EDN flashing kit - recessed install into natural slate up to 8mm thick  
 All dimensions are in millimetres where shown

NOTE! When installing VELUX roof windows, flashings and accessories, please ensure compliance with building regulations and British/European standards where necessary. This detail represents the principles of a typical installation only and the design and specification of the final detail is the responsibility of others.

|                  |                          |                                |
|------------------|--------------------------|--------------------------------|
| Latest revision: | Date: <b>August 2014</b> | File name:                     |
|                  | Rev no:                  | <b>GGL-EDN-0114-1303</b>       |
|                  | Rev date:                |                                |
|                  | Drawn: <b>PJH</b>        | Scale: <b>1:5 approx. @ A3</b> |